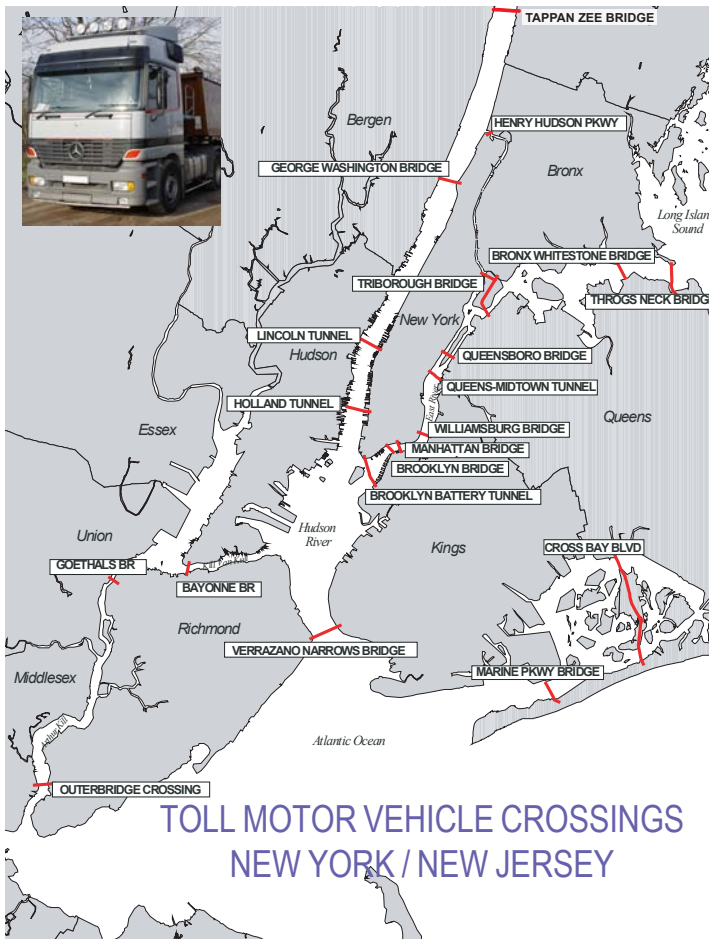


ANNUAL TRUCK TOLL VOLUME - 2005

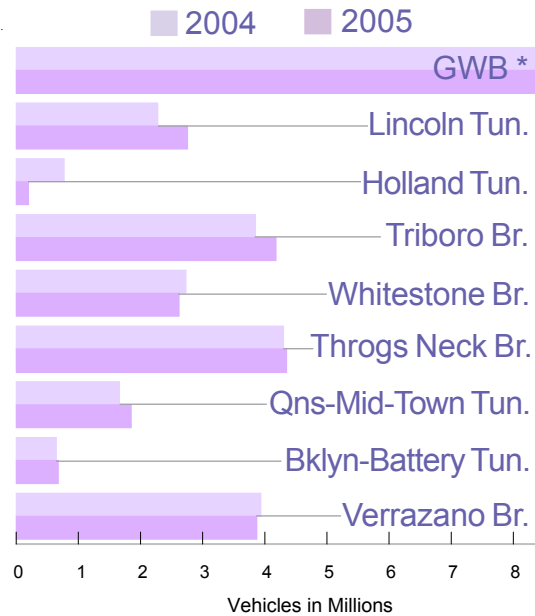
Freight transportation is a critical component of the New York Metropolitan Transportation Council's Regional Transportation Plan. The Council collects and analyzes relevant data in the assessment of progress toward the achievement of its transportation plans, goals and objectives. The monitoring of truck volumes is identified as a performance measure. The monitored data are collected on an ongoing basis from public agencies that operate toll facilities in the five boroughs of the New York City, as well as sections of the Garden State Parkway, New Jersey Turnpike, and upstate bridges. The monitored data are analyzed for a 24-month period for 2004 and 2005 and provide information on highway-based freight movement in the metropolitan region.

Data Sources:

- MTA B&T - Metropolitan Transportation Authority - Bridges and Tunnels
- PANY&NJ - Port Authority of New York and New Jersey
- NYSTA - New York State Thruway Authority
- NYSBA - New York State Bridge Authority
- NJHA - New Jersey Highway Authority (Garden State Parkway)
- NJTA - New Jersey Turnpike Authority
- NCBA - Nassau County Bridge Authority

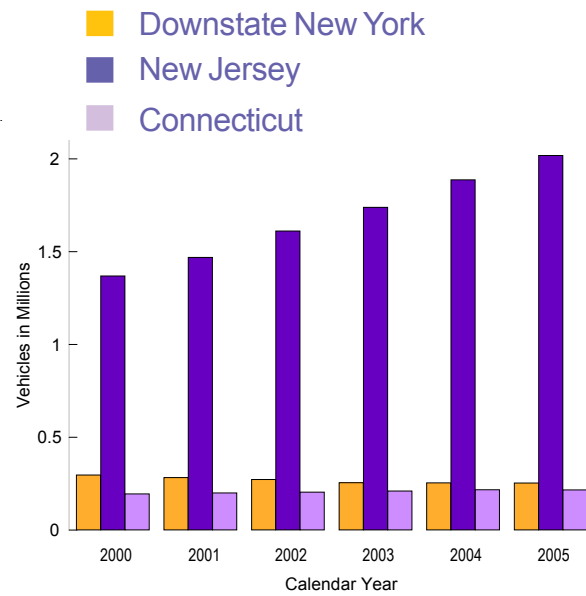


SELECTED RIVER CROSSINGS ANNUAL TRUCK TOLL VOLUMES



Source: Toll agency data
* George Washington Bridge

ANNUAL COMMERCIAL VEHICLE REGISTRATIONS



Source: Toll agency data

For additional information about data on this brochure, please call Mary Hrabowska - NYMTC Data Monitoring and Analysis Unit - at 212.383.7231 or e-mail: mhrabowska@dot.state.ny.us

Truck Toll River Crossings

	2004 Volume	2005 Volume	Lanes*
George Washington Br. (PANYNJ): I-95	8,438,664	8,478,634	14
Verrazano Narrow Br. (MTA B&T): I-278	3,939,554	3,874,824	12
Throgs Neck Br. (MTA B&T): I-278	4,303,092	4,353,610	6
Newburgh-Beacon Br. (NYSBA): I-84	3,508,912	3,408,750	7
Triborough Br. (MTA B&T): I-278	3,856,371	4,183,146	8
Tappan Zee Br. (NYSTA): I-278	3,401,348	3,193,988	7
Bronx-Whitestone Br. (MTA B&T): I-678	2,735,181	2,626,402	6
Goethals Br. (PANYNJ): I-278	2,441,866	2,533,986	4
Lincoln Tun. (PANYNJ): I-495	2,282,270	2,761,240	6
Queens-Midtown Tun. (MTA B&T): I-495	1,667,274	1,853,291	4
Outerbridge Crossing (PANYNJ): N-440	1,736,110	1,737,290	4
Holland Tun. (PANYNJ): I-78	777,720	201,278	4
Brooklyn Battery Tun. (MTA B&T): I-478	649,979	681,781	4
Bayonne Br. (PANYNJ): NY-440	732,634	785,852	4
Mid-Hudson Br. (NYSBA): US-44	494,128	504,012	5
Rip Van Winkle Br. (NYSBA): NY-23	289,076	291,304	2
Cross-Bay Boulevard Br. (MTA B&T)	287,861	311,482	6
Kingston-Rhinecliff Br. (NYSBA): US-209	251,922	255,324	2
Marine Parkway Br. (MTA B&T)	175,329	181,021	4
Bear Mountain Br. (NYSBA): US-6	153,560	145,390	2
Henry Hudson Br. (MTA B&T): NY-9A	104,235	101,424	7
Atlantic Beach Br. (NCBA)	72,986	70,592	5

Toll Barriers/Interchanges	2004 Volume	2005 Volume	Lanes
NJ Turnpike Exit 7A-18	24,357,173	24,687,319	6-14 lanes~
New Rochelle (NYSTA): I-95	5,916,730	5,288,892	6
NJHA - Garden State Pkwy*	4,571,319	4,815,318	2-4 lanes~
Spring Valley (NYSTA): I-87/287	3,037,832	2,794,284	3-4 lanes~
Yonkers (NYSTA): I-87	2,262,334	2,030,843	6
Harriman (NYSTA): I-87	1,536,093	1,372,432	3

* Includes trucks weighing 3.5 tons or less * Travel lanes, not toll plaza lanes
Source: Operating Agency monthly records ~ depending on highway segment

Commercial Vehicle Registrations

County	2004	2005	% Change 2005/2004
Bronx	7,915	8,176	3.3%
Kings	17,660	17,502	-0.9%
New York	11,190	10,950	-2.1%
Queens	29,835	30,093	0.9%
Richmond	5,664	5,567	-1.7%
New York City	72,264	72,288	0.0%
Dutchess	17,165	16,509	-3.8%
Orange	23,625	22,977	-2.7%
Westchester	23,519	23,635	0.5%
Putnam	4,932	4,846	-1.7%
Rockland	7,825	7,845	0.3%
Hudson Valley	77,066	75,812	-1.6%
Nassau	30,262	30,011	-0.8%
Suffolk	74,974	75,010	0.0%
Long Island	105,236	105,021	-0.2%
Fairfield County	84,784	83,815	-1.1%
Litchfield	37,298	37,096	-0.5%
New Haven	95,264	95,098	-0.2%
South-Western Connecticut	217,346	216,009	-0.6%
Bergen	240,361	257,470	7.1%
Essex	156,428	169,133	8.1%
Hudson	94,626	102,338	8.1%
Hunterdon	53,908	57,018	5.8%
Mercer	99,505	107,766	8.3%
Middlesex	205,534	219,410	6.8%
Monmouth	206,046	219,878	6.7%
Morris	172,630	181,796	5.3%
Ocean	180,503	194,474	7.7%
Passaic	133,735	143,701	7.5%
Somerset	99,457	104,967	5.5%
Sussex	64,741	68,662	6.1%
Union	137,824	147,568	7.1%
Warren	41,402	44,119	6.6%
Northern New Jersey	1,886,700	2,018,300	7.0%
Total Region	2,358,612	2,487,430	5.5%



WWW.NYMTC.ORG



TRUCK TOLL VOLUMES TRENDS

At a Glance
2005



September 2006

